

Odvodňovací a drenážní
přenosná čerpadla s
chladícím pláštěm

EUB

EUBS AISI 304

EUBI AISI 316

NÁHRADNÍ DÍLY



POWER: 0.5~2HP (0.37~1.5kW)

MAX HEAD: 19.5 meter

MAX FLOW: 470 lpm



50EUB-5.05~10



50EUB-5.20

PRODUCT NOMENCLATURE

Example: $\frac{50}{\textcircled{1}}$ $\frac{\text{EUB}}{\textcircled{2}}$ - $\frac{5.05}{\textcircled{3}}$ $\frac{\text{S}}{\textcircled{4}}$

- 1) Discharge Size
- 2) Model
- 3) Frequency & HP
- 4) Phase (1Ø / 3Ø)

Features

- High resistance to abrasive liquids
- Loss wax casting AISI 304 and AISI 316 for EUBS and EUBI
- Viton gasket, O-rings, and Lip seal for EUBI (AISI 316)
- Compact & Lightweight design
- Efficient circumferential cooling for continuous duty

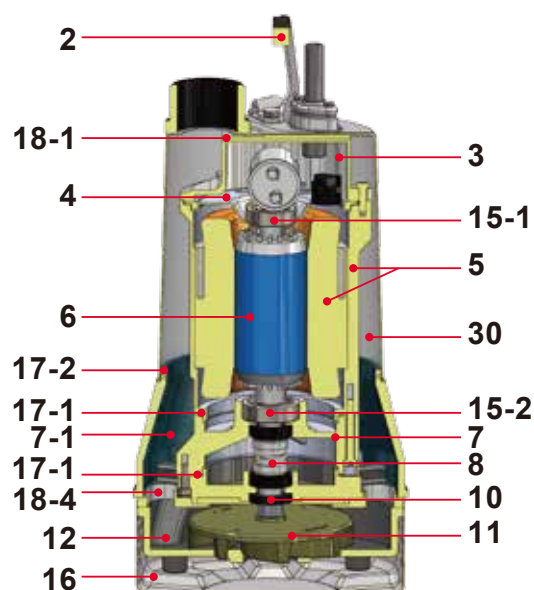
Applications

- Site drainage, mining, tunneling, public works, floods
- Cement industry, river intake, civil engineering projects
- Version "S" in AISI 304 and "I" in AISI 316 are suitable for light chemical liquids in drainage and general pumping applications

Parts and Material List

No.	Part	Material
		EUB
2	Handle	Steel+NBR
3	Motor Cover	ADC12
4	Bracket	Steel
5	Motor Housing + Stator	ADC12+Steel
6	Shaft with Rotor	AISI 410
7	Oil Chamber	0.5~1HP : ADC12 ; 2HP : AISI7Mg
7-1	Oil Chamber	2HP : AISiMg
8	Mechanical Seal	CA/CE+SIC/SIC
10	Lip Seal	NBR
11	Impeller	Hytrel
12	Pump Casing	EN-GJL-200
15-1	Upper Bearing	NTN/TPI
15-2	Lower Bearing	NTN/TPI
16	Strainer	AISI 304
17-1	O-ring	NBR
17-2	O-ring	NBR
18-1	Gasket	NBR
18-4	Volute Liner	NBR
30	Outer Housing	AISI 304

TPI is a family brand of NTN group.



50EUB-5.20

POWER: 0.5~2HP (0.37~1.5kW)

MAX HEAD: 18 meter

MAX FLOW: 470 lpm



50EUBS-5.05~10



80EUBS-5.20

PRODUCT NOMENCLATURE

Example: $\frac{50}{\textcircled{1}}$ $\frac{\text{EUBS}}{\textcircled{2}}$ - $\frac{5.05}{\textcircled{3}}$ $\frac{\text{S}}{\textcircled{4}}$

- 1) Discharge Size
- 2) Model
- 3) Frequency & HP
- 4) Phase (1Ø / 3Ø)

Features

- High resistance to abrasive liquids
- Loss wax casting AISI 304 and AISI 316 for EUBS and EUBI
- Viton gasket, O-rings, and Lip seal for EUBI (AISI 316)
- Compact & Lightweight design
- Efficient circumferential cooling for continuous duty

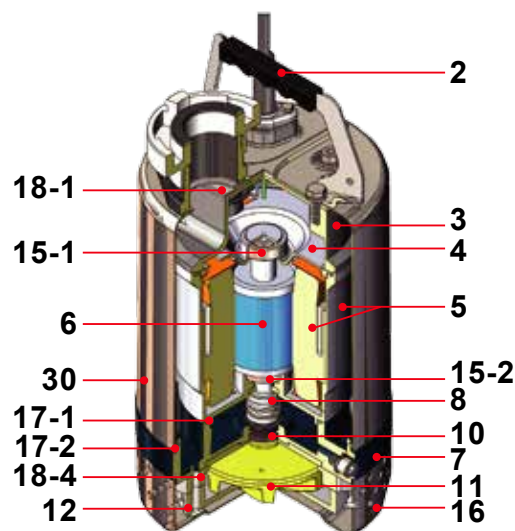
Applications

- Site drainage, mining, tunneling, public works, floods
- Cement industry, river intake, civil engineering projects
- Version "S" in AISI 304 and "I" in AISI 316 are suitable for light chemical liquids in drainage and general pumping applications

Parts and Material List

No.	Part	Material
EUBS		
2	Handle	AISI 304+NBR
3	Motor Cover	AISI 304
4	Bracket	EN-GJL-200
5	Motor Housing + Stator	AISI 304
6	Shaft with Rotor	AISI 304
7	Oil Chamber	AISI 304
8	Mechanical Seal	CA/CE+SIC/SIC
10	Lip Seal	NBR
11	Impeller	AISI 304
12	Pump Casing	AISI 304
15-1	Upper Bearing	NTN/TPI
15-2	Lower Bearing	NTN/TPI
16	Strainer	AISI 304
17-1	O-ring	NBR
17-2	O-ring	NBR
18-1	Gasket	EPDM
18-4	Volute Liner	EPDM
30	Outer Housing	AISI 304

TPI is a family brand of NTN group.



50EUB(S,I)-5.05~10

POWER: 0.5~1HP (0.37~0.75kW)

MAX HEAD: 15.5 meter

MAX FLOW: 330 lpm



50EUBI-5.05~10

PRODUCT NOMENCLATURE

Example: $\frac{50}{\textcircled{1}}$ $\frac{\text{EUBI}}{\textcircled{2}}$ - $\frac{5.05}{\textcircled{3}}$ $\frac{\text{S}}{\textcircled{4}}$

1) Discharge Size

2) Model

3) Frequency & HP

4) Phase (1Ø / 3Ø)

Features

- High resistance to abrasive liquids
- Loss wax casting AISI 304 and AISI 316 for EUBS and EUBI
- Viton gasket, O-rings, and Lip seal for EUBI (AISI 316)
- Compact & Lightweight design
- Efficient circumferential cooling for continuous duty

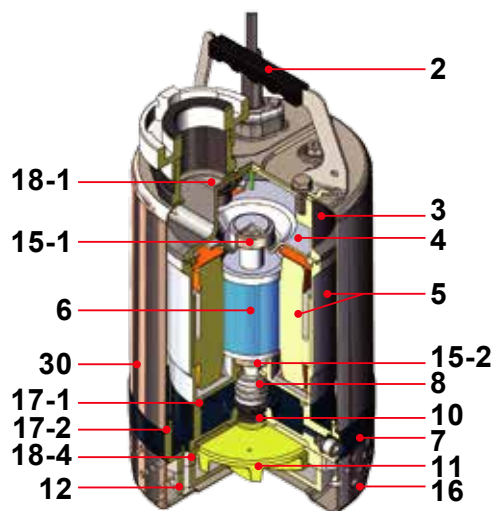
Applications

- Site drainage, mining, tunneling, public works, floods
- Cement industry, river intake, civil engineering projects
- Version "S" in AISI 304 and "I" in AISI 316 are suitable for light chemical liquids in drainage and general pumping applications

Parts and Material List

No.	Part	Material
EUBI		
2	Handle	AISI 304+NBR
3	Motor Cover	AISI 316
4	Bracket	EN-GJL-200
5	Motor Housing + Stator	AISI 316
6	Shaft with Rotor	AISI 316
7	Oil Chamber	AISI 316
8	Mechanical Seal	CA/CE+SIC/SIC
10	Lip Seal	VITON
11	Impeller	AISI 316
12	Pump Casing	AISI 316
15-1	Upper Bearing	NTN/TPI
15-2	Lower Bearing	NTN/TPI
16	Strainer	AISI 316
17-1	O-ring	VITON
17-2	O-ring	VITON
18-1	Gasket	VITON
18-4	Volute Liner	EPDM
30	Outer Housing	AISI 316

TPI is a family brand of NTN group.



50EUB(S,I)-5.05~10

50EUB-5.05S~10S / 50(80)EUB-5.20S

Specifications



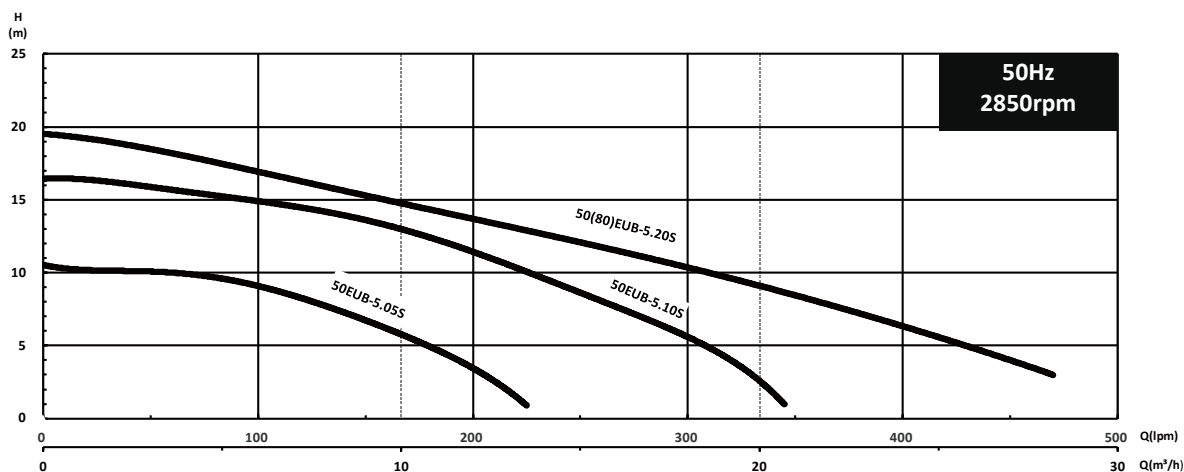
Steel coated with thermoplastic polyester elastomer
DU PONT Hytrel®

ITEM		DESCRIPTION
LIMITS OF USE	Liquid TEMP.	0~40°C
	Application	As suggested application page 1
TYPE	Frequency	50Hz
	Motor	2P (2850RPM) . Dry Motor
	Insulation	0.5~1HP:Class B ; 2HP:Class F
	Protection	IP 68
	Protector	Auto-Cut
	Bearing	Ball Type
	Mech. Seal	Dual. Mechanical Seal
	Impeller	Semi-Open Imprller
MATERIAL	Motor Cover	ADC12
	Motor Frame	ADC12+Steel
	SHAFT	AISI 410
	Mech. Seal	Upper : CA/CE ; Lower : SIC/SIC
	Pump Casing	EN-GJL-200
	Impeller	Hytrel
	Cable	H07RN-F / SJTOW / STOW

Data Chart

MODEL	OUTPUT		DISCHARGE	PHASE	1Ø	3Ø	3Ø	3Ø	RATED		MAXIMUM		FREE PASSAGE	WEIGHT W/O CABLE
	HP	kW	Inch						m	lpm	m	lpm	mm	lØ-kg
50EUB-5.05S	0.5	0.37	2"	FULL LOAD AMPERAGE	230V	380V	400V	415V	8	125	10.5	225	6	11.3
50EUB-5.10S	1	0.75	2"		6A	-	-	-	10	225	16.5	345	6	13.7
50(80)EUB-5.20S	2	1.5	2"(3")		12A	-	-	-	11	275	19.5	470	6	21.1

Performance Curve



MODEL	OUTPUT		DISCHARGE	Q(lpm)	0	100	200	400	470	Q(m³/h)	0	5	10	20	25
	HP	kW	Inch												
50EUB-5.05S	0.5	0.37	2"	H(m)	10.5	9.2	3.5	-	-	H(m)	10.5	9.6	5.8	-	-
50EUB-5.10S	1	0.75	2"		16.5	14.9	11.5	-	-		16.5	15.2	13	2.6	-
50(80)EUB-5.20S	2	1.5	2"(3")		19.5	16.9	13.7	6.3	3		19.5	17.5	14.8	9.1	5.6

All technical information is subject to change without notice.

50EUB-5.05T~10T / 50(80)EUB-5.20T

Specifications



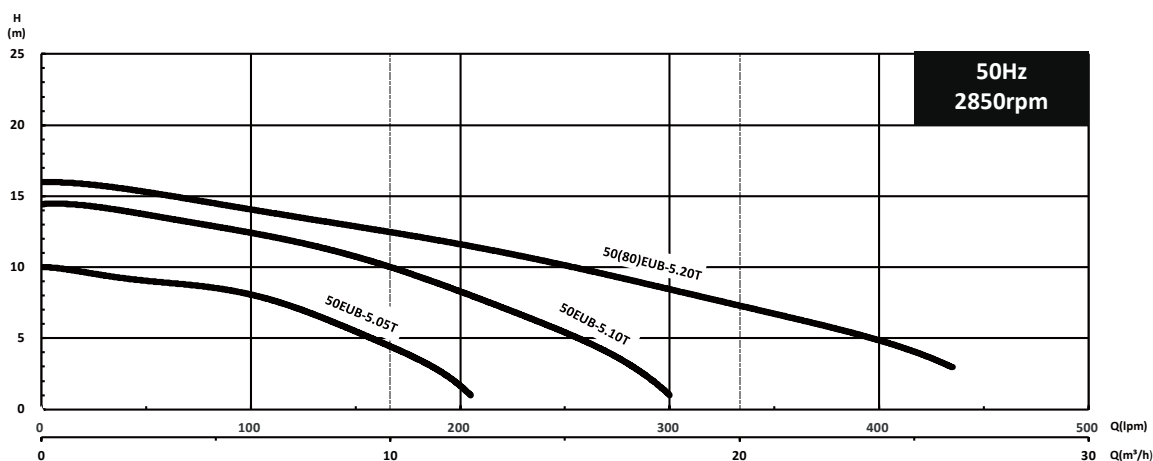
Steel coated with thermoplastic polyester elastomer
DU PONT Hytel®

ITEM		DESCRIPTION
LIMITS OF USE	Liquid TEMP.	0~40°C
	Application	As suggested application page 1
TYPE	Frequency	50Hz
	Motor	2P (2850RPM) . Dry Motor
	Insulation	0.5~1HP:Class B ; 2HP:Class F
	Protection	IP 68
	Protector	Auto-Cut
	Bearing	Ball Type
	Mech. Seal	Dual. Mechanical Seal
	Impeller	Semi-Open Imprller
MATERIAL	Motor Cover	ADC12
	Motor Frame	ADC12+Steel
	SHAFT	AISI 410
	Mech. Seal	Upper : CA/CE ; Lower : SIC/SIC
	Pump Casing	EN-GJL-200
	Impeller	Hytel
	Cable	H07RN-F / SJTOW / STOW

Data Chart

MODEL	OUTPUT		DISCHARGE Inch	PHASE	1Ø	3Ø	3Ø	3Ø	RATED		MAXIMUM		FREE PASSAGE mm	WEIGHT W/O CABLE 3Ø-kg
	HP	kW							m	lpm	m	lpm		
50EUB-5.05T	0.5	0.37	2"	FULL LOAD AMPERAGE	230V	380V	400V	415V	8	100	10	205	6	11.3
50EUB-5.10T	1	0.75	2"		-	1.9A	1.9A	1.9A	10	165	14.5	300	6	13.7
50(80)EUB-5.20T	2	1.5	2"(3")		-	3.5A	3.5A	3.5A	11	215	16	435	6	21.1

Performance Curve



MODEL	OUTPUT		DISCHARGE Inch	Q(lpm)	Q(m³/h)					Q(m³/h)	H(m)				
	HP	kW			0	100	200	400	435		0	5	10	20	26.1
50EUB-5.05T	0.5	0.37	2"	10	8.1	1.8	-	-	10.0	8.5	4.5	-	-		
50EUB-5.10T	1	0.75	2"	14.5	12.4	8.3	-	-	14.5	12.9	10	-	-		
50(80)EUB-5.20T	2	1.5	2"(3")	16	14	11.6	4.8	3	16.0	14.5	12.5	7.3	3		

All technical information is subject to change without notice.

50EUBS-5.05S~10S / 50(80)EUBS-5.20S

Specifications



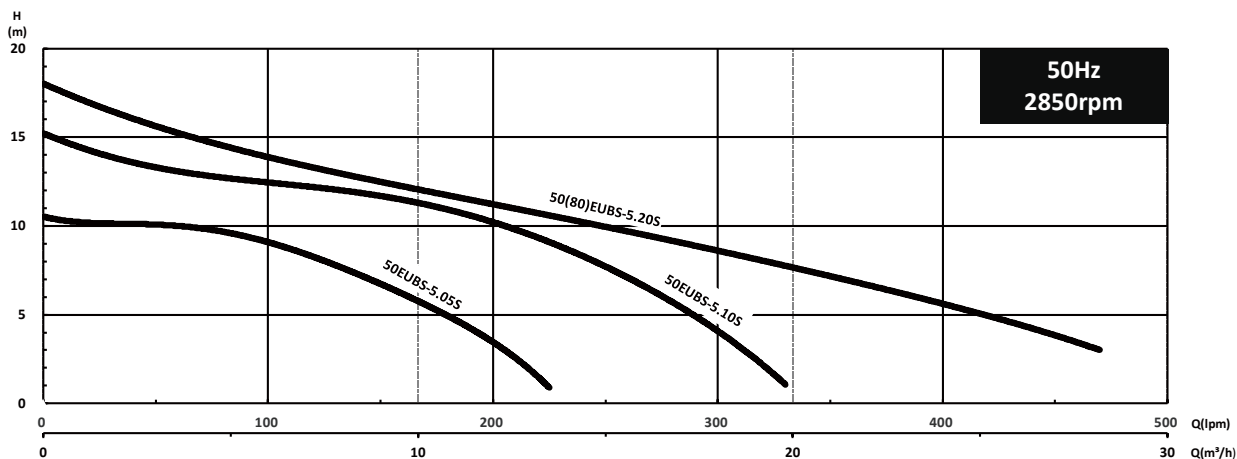
Loss Wax Stainless Steel AISI 304 EUBS Impeller

ITEM		DESCRIPTION
LIMITS OF USE	Liquid TEMP.	0~40°C
	Application	As suggested application page 1
TYPE	Frequency	50Hz
	Motor	2P (2850RPM) . Dry Motor
	Insulation	0.5~1HP:Class B ; 2HP:Class F
	Protection	IP 68
	Protector	Auto-Cut
	Bearing	Ball Type
	Mech. Seal	Dual. Mechanical Seal
	Impeller	Semi-Open Impller
MATERIAL	Motor Cover	AISI 304
	Motor Frame	AISI 304
	SHAFT	AISI 304
	Mech. Seal	Upper : CA/CE ; Lower : SIC/SIC
	Pump Casing	AISI 304
	Impeller	AISI 304
	Cable	H07RN-F / SJTOW / STOW

Data Chart

MODEL	OUTPUT		DISCHARGE	PHASE	1Ø				RATED		MAXIMUM		FREE PASSAGE	WEIGHT W/O CABLE
	HP	kW			Inch	230V	380V	400V	415V	m	lpm	m		
50EUBS-5.05S	0.5	0.37	2"	FULL LOAD AMPERAGE	3A	-	-	-	8	125	10.5	225	6	14.1
50EUBS-5.10S	1	0.75	2"		6A	-	-	-	10	225	15.5	330	6	17.2
50(80)EUBS-5.20S	2	1.5	2"(3")		12A	-	-	-	11	215	18	470	6	25

Performance Curve



MODEL	OUTPUT		DISCHARGE	Q(lpm)	Q(m³/h)					Q(m³/h)	H(m)				
	HP	kW			Inch	0	100	200	400		470	0	5	10	20
50EUBS-5.05S	0.5	0.37	2"	H(m)	10.5	9.1	3.5	-	-	H(m)	10.5	9.6	5.8	-	-
50EUBS-5.10S	1	0.75	2"	15.5	12.5	10.3	-	-	15.5		12.7	11.4	-	-	
50(80)EUBS-5.20S	2	1.5	2"(3")	18	13.9	11.2	5.6	3	18.0		14.4	12.1	7.7	5	

All technical information is subject to change without notice.

50EUBS-5.05T~10T / 50(80)EUBS-5.20T

Specifications



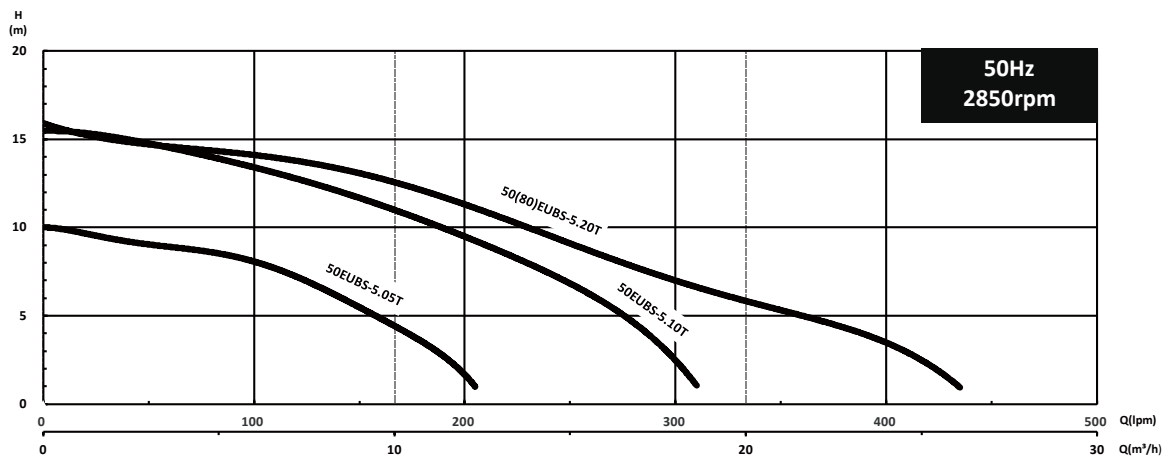
Loss Wax Stainless Steel AISI 304 EUBS Impeller

ITEM		DESCRIPTION
LIMITS OF USE	Liquid TEMP.	0~40°C
	Application	As suggested application page 1
TYPE	Frequency	50Hz
	Motor	2P (2850RPM) . Dry Motor
	Insulation	0.5~1HP:Class B ; 2HP:Class F
	Protection	IP 68
	Protector	Auto-Cut
	Bearing	Ball Type
	Mech. Seal	Dual. Mechanical Seal
	Impeller	Semi-Open Impller
MATERIAL	Motor Cover	AISI 304
	Motor Frame	AISI 304
	SHAFT	AISI 304
	Mech. Seal	Upper : CA/CE ; Lower : SIC/SIC
	Pump Casing	AISI 304
	Impeller	AISI 304
	Cable	H07RN-F / SJTOW / STOW

Data Chart

MODEL	OUTPUT		DISCHARGE Inch	PHASE FULL LOAD AMPERAGE	1Ø	3Ø	3Ø	3Ø	RATED		MAXIMUM		FREE PASSAGE	WEIGHT W/O CABLE
	HP	kW			230V	380V	400V	415V	m	lpm	m	lpm	mm	3Ø-kg
50EUBS-5.05T	0.5	0.37	2"	-	-	0.9A	0.9A	0.9A	8	100	10	205	6	14.1
50EUBS-5.10T	1	0.75	2"	-	-	1.9A	1.9A	1.9A	10	190	15.5	310	6	17.2
50(80)EUBS-5.20T	2	1.5	2"(3")	-	-	3.5A	3.5A	3.5A	11	215	16	435	6	25

Performance Curve



MODEL	OUTPUT		DISCHARGE Inch	Q(lpm)	0	100	200	400	419	Q(m³/h)	0	5	10	20	25.1
	HP	kW			H(m)	10	8.1	1.8	-		-	H(m)	10.0	8.6	4.5
50EUBS-5.05T	0.5	0.37	2"	10	8.1	1.8	-	-	10.0	8.6	4.5	-	-	-	-
50EUBS-5.10T	1	0.75	2"	15.5	13.4	9.5	-	-	15.5	13.9	11	-	-	-	-
50(80)EUBS-5.20T	2	1.5	2"(3")	16.8	12.7	10	3.5	1	16.8	13.3	11	6	2.8	-	-

50EUBI-5.05S~10S

Specifications



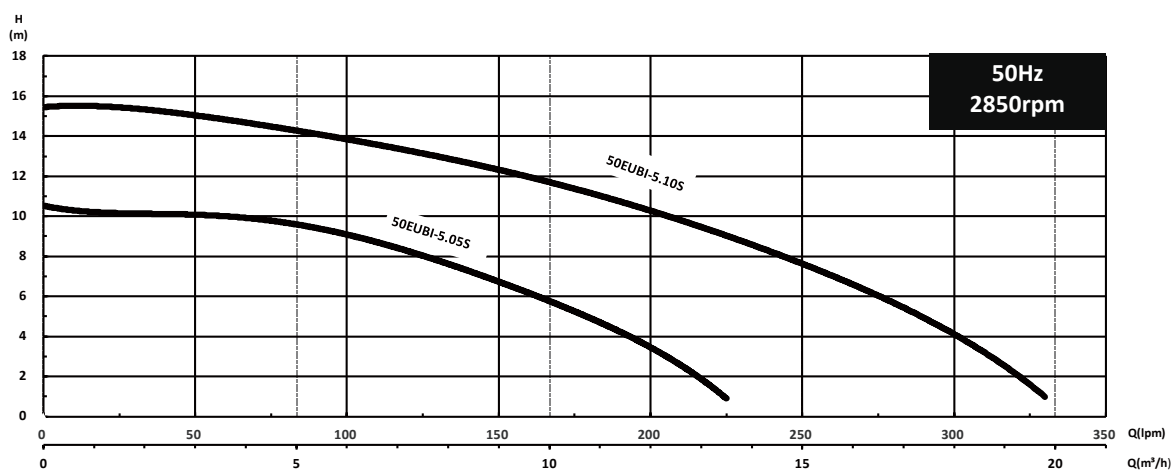
Loss Wax Stainless Steel AISI 316 EUBI Impeller

ITEM		DESCRIPTION
LIMITS OF USE	Liquid TEMP.	0~40°C
	Application	As suggested application page 1
TYPE	Frequency	50Hz
	Motor	2P (2850RPM) . Dry Motor
	Insulation	Class B
	Protection	IP 68
	Protector	Auto-Cut
	Bearing	Ball Type
	Mech. Seal	Dual. Mechanical Seal
	Impeller	Semi-Open Impeller
MATERIAL	Motor Cover	AISI 316
	Motor Frame	AISI 316
	SHAFT	AISI 316
	Mech. Seal	Upper : CA/CE ; Lower : SIC/SIC
	Pump Casing	AISI 316
	Impeller	AISI 316
	Cable	H07RN-F / SJTOW / STOW

Data Chart

MODEL	OUTPUT		DISCHARGE Inch	PHASE	1Ø	3Ø	3Ø	3Ø	RATED		MAXIMUM		FREE PASSAGE mm	WEIGHT W/O CABLE 1Ø-kg
	HP	kW							m	lpm	m	lpm		
50EUBI-5.05S	0.5	0.37	2"	FULL LOAD	230V	380V	400V	415V	8	125	10.5	225	6	13.8
50EUBI-5.10S	1	0.75	2"	AMPERAGE	3A	-	-	-	10	205	15.5	330	6	16.7

Performance Curve



MODEL	OUTPUT		DISCHARGE Inch	Q(lpm)	Q(m³/h)					Q(m³/h)	H(m)				
	HP	kW			0	100	200	300	330		0	5	10	15	19.8
50EUBI-5.05S	0.5	0.37	2"	H(m)	10.5	9.1	3.5	-	-	H(m)	10.5	9.6	5.8	-	-
50EUBI-5.10S	1	0.75	2"		15.5	13.8	10.3	4.1	1		15.5	14.3	11.7	7.6	1

All technical information is subject to change without notice.

50EUBI-5.05T~10T

Specifications



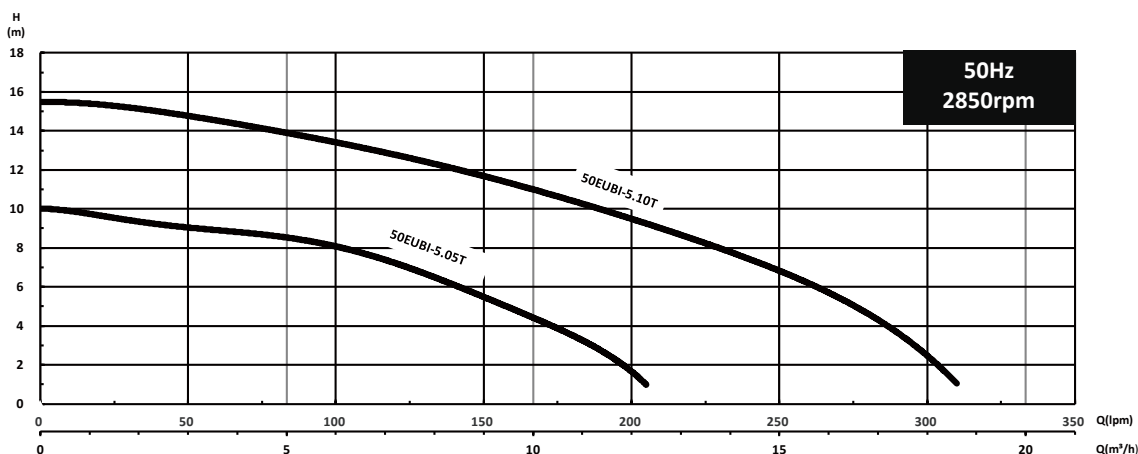
Loss Wax Stainless Steel AISI 316 EUBI Impeller

ITEM		DESCRIPTION
LIMITS OF USE	Liquid TEMP.	0~40°C
	Application	As suggested application page 1
TYPE	Frequency	50Hz
	Motor	2P (2850RPM) . Dry Motor
	Insulation	Class B
	Protection	IP 68
	Protector	Auto-Cut
	Bearing	Ball Type
	Mech. Seal	Dual. Mechanical Seal
	Impeller	Semi-Open Impeller
MATERIAL	Motor Cover	AISI 316
	Motor Frame	AISI 316
	SHAFT	AISI 316
	Mech. Seal	Upper : CA/CE ; Lower : SIC/SIC
	Pump Casing	AISI 316
	Impeller	AISI 316
	Cable	H07RN-F / SJTOW / STOW

Data Chart

MODEL	OUTPUT		DISCHARGE Inch	PHASE FULL LOAD AMPERAGE	1Ø	3Ø	3Ø	3Ø	RATED		MAXIMUM		FREE PASSAGE mm	WEIGHT W/O CABLE 3Ø-kg
	HP	kW			230V	380V	400V	415V	m	lpm	m	lpm		
50EUBI-5.05T	0.5	0.37	2"	-	-	0.9A	0.9A	0.9A	8	100	10	205	6	13.8
50EUBI-5.10T	1	0.75	2"	-	-	1.9A	1.9A	1.9A	10	190	15.5	310	6	16.7

Performance Curve



MODEL	OUTPUT		DISCHARGE Inch	Q(lpm)	0	100	200	250	310	Q(m³/h)	0	5	10	15	18.6
	HP	kW			H(m)	10	8.1	1.7	-		-	H(m)	10.0	8.5	4.5
50EUBI-5.05T	0.5	0.37	2"	10	8.1	1.7	-	-	-	10.0	8.5	4.5	-	-	
50EUBI-5.10T	1	0.75	2"	15.5	13.4	9.5	6.8	1	1	15.5	13.9	11	6.8	1	

PARTS LIST

MODELS : 50EUB-5.05~10 (0.5~1HP)

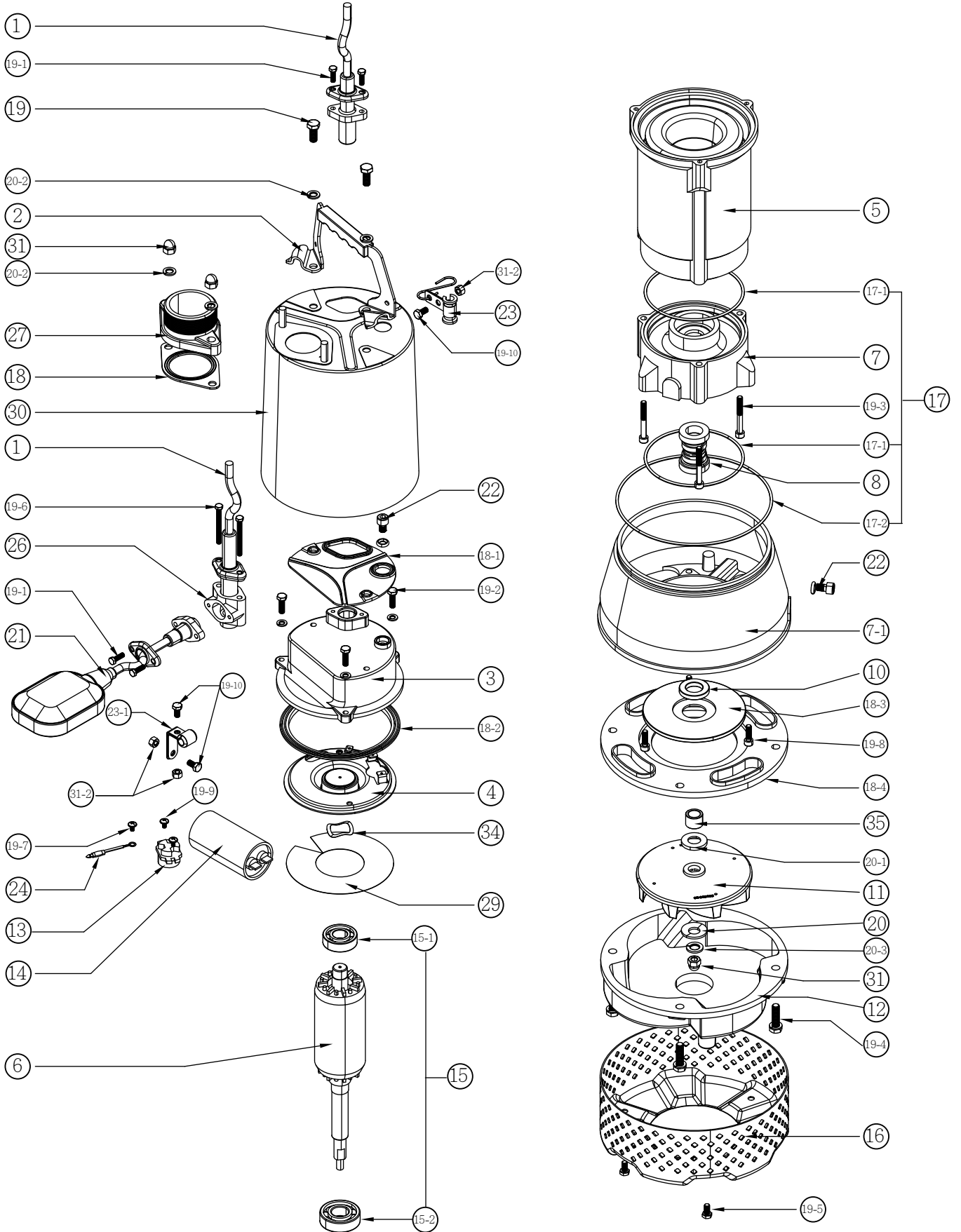
NO	Name	Mtrl	Photo	NO	Name	Mtrl	Photo
1	Cable	H07RN-F/ SJTOW/ STOW		13	Protector (1 Phase)	KLIXON	 (Optional)
2	Handle	Steel + NBR		13	Protector (3 Phase)	KLIXON	
3	Motor Cover	ADC12		14	Capacitor	-	
4	Bracket	Steel		15	Bearings	NTN/TPI	
5	Motor Housing +Stator	ADC12 + Steel		16	Strainer	AISI 304	
6	Shaft with Rotor	AISI 410		17	O-rings	NBR	
7	Oil Chamber	ADC12		18-3	Wearing Plate	PA66+ 20%GF	
8	Mechanical Seal	CA/CE + SIC/SIC		18-4	Volute Liner	NBR	
10	Lip Seal	NBR		21	Float Switch (Optional)	-	
11	Impeller	Hytrell		27	Flange	EN-GJL-150	
12	Pump Casing	EN-GJL-200		30	Outer Housing	AISI 304	

NO	Name	Mtrl	NO	Name	Mtrl
18	Gasket	NBR	20	M8 Flat Washer	AISI 304
18-1	Gasket	NBR	20-1	Flat Washer	AISI 304
18-2	Gasket	NBR	20-2	M8 Spring Washer	AISI 304
19	Screw	AISI 304	22	Oil Filler Plug with O-ring	-
19-1	Screw	AISI 304	23	Cable Seat	AISI 304/NBR
19-2	Screw	AISI 304	23-1	90 Deg Cable Seat	AISI 304/NBR
19-3	Screw	AISI 304	24	Earth Line	-
19-4	Screw	AISI 304	26	T adapter (Optional)	-
19-5	Screw	AISI 304	29	Insulating Paper	-
19-6	Screw	AISI 304	31	Nut	AISI 304
19-7	Screw	Steel	31-2	Nut	AISI 304
19-9	Screw	Steel	34	Corrugated Spring	Steel
19-10	Screw	AISI 304	35	Sleeve	AISI 304

TPI is a family brand of NTN group.


ASSEMBLY VIEW

MODELS : 50(80)EUB-5.20 (2HP)



PARTS LIST

MODELS : 50(80)EUB-5.20 (2HP)

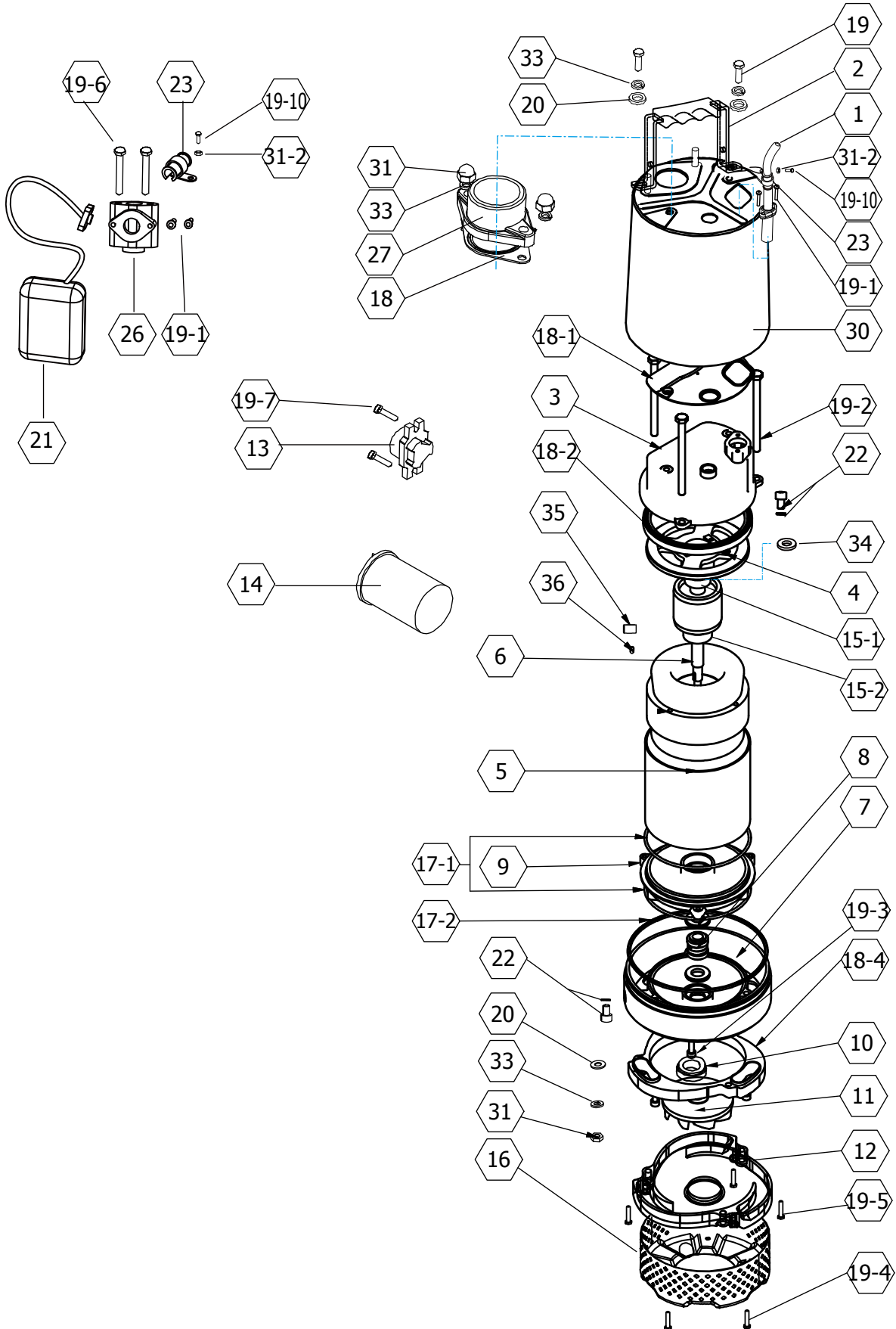
NO	Name	Mtrl	Photo	NO	Name	Mtrl	Photo
1	Cable	H07RN-F/ SJTOW/ STOW		13	Protector (1 Phase)	KLIXON	 (Optional)
2	Handle	Steel + NBR		13	Protector (3 Phase)	KLIXON	
3	Motor Cover	ADC12		14	Capacitor	-	
4	Bracket	Steel		15	Bearings	NTN/TPI	
5	Motor Housing +Stator	ADC12 + Steel		16	Strainer	AISI 304	
6	Shaft with Rotor	AISI 410		17	O-rings	NBR	
7	Oil Chamber A	AISi7Mg		18-3	Wearing Plate	PA66+ 20%GF	
7-1	Oil Chamber B	AISi7Mg		18-4	Volute Liner	NBR	
8	Mechanical Seal	CA/CE + SIC/SIC		21	Float Switch (Optional)	-	
10	Lip Seal	NBR		27	Flange	EN-GJL-150	
11	Impeller	Hytrel		30	Pump Housing	AISI 304	
12	Pump Casing	EN-GJL-200					

NO	Name	Mtrl	NO	Name	Mtrl
18	Gasket	NBR	20	M10 Flat Washer	AISI 304
18-1	Gasket	NBR	20-1	Flat Washer	AISI 304
18-2	Gasket	NBR	20-2	M8 Spring Washer	AISI 304
19	Screw	AISI 304	20-3	M10 Spring Washer	AISI 304
19-1	Screw	AISI 304	22	Oil Filler Plug with O-ring	-
19-2	Screw	AISI 304	23	Cable Seat	AISI 304/NBR
19-3	Screw	Steel	23-1	90 Deg Cable Seat	AISI 304/NBR
19-4	Screw	AISI 304	24	Earth Line	-
19-5	Screw	AISI 304	26	T adapter (Optional)	-
19-6	Screw	AISI 304	29	Insulating Paper	-
19-7	Screw	Steel	31	Nut	AISI 304
19-8	Screw	AISI 304	31-2	Nut	AISI 304
19-9	Screw	Steel	34	Corrugated Spring	Steel
19-10	Screw	AISI 304	35	Sleeve	AISI 304

TPI is a family brand of NTN group.

ASSEMBLY VIEW

MODELS : 50EUBS-5.05~10 (0.5~1HP)



PARTS LIST

MODELS : 50EUBS-5.05~10 (0.5~1HP)

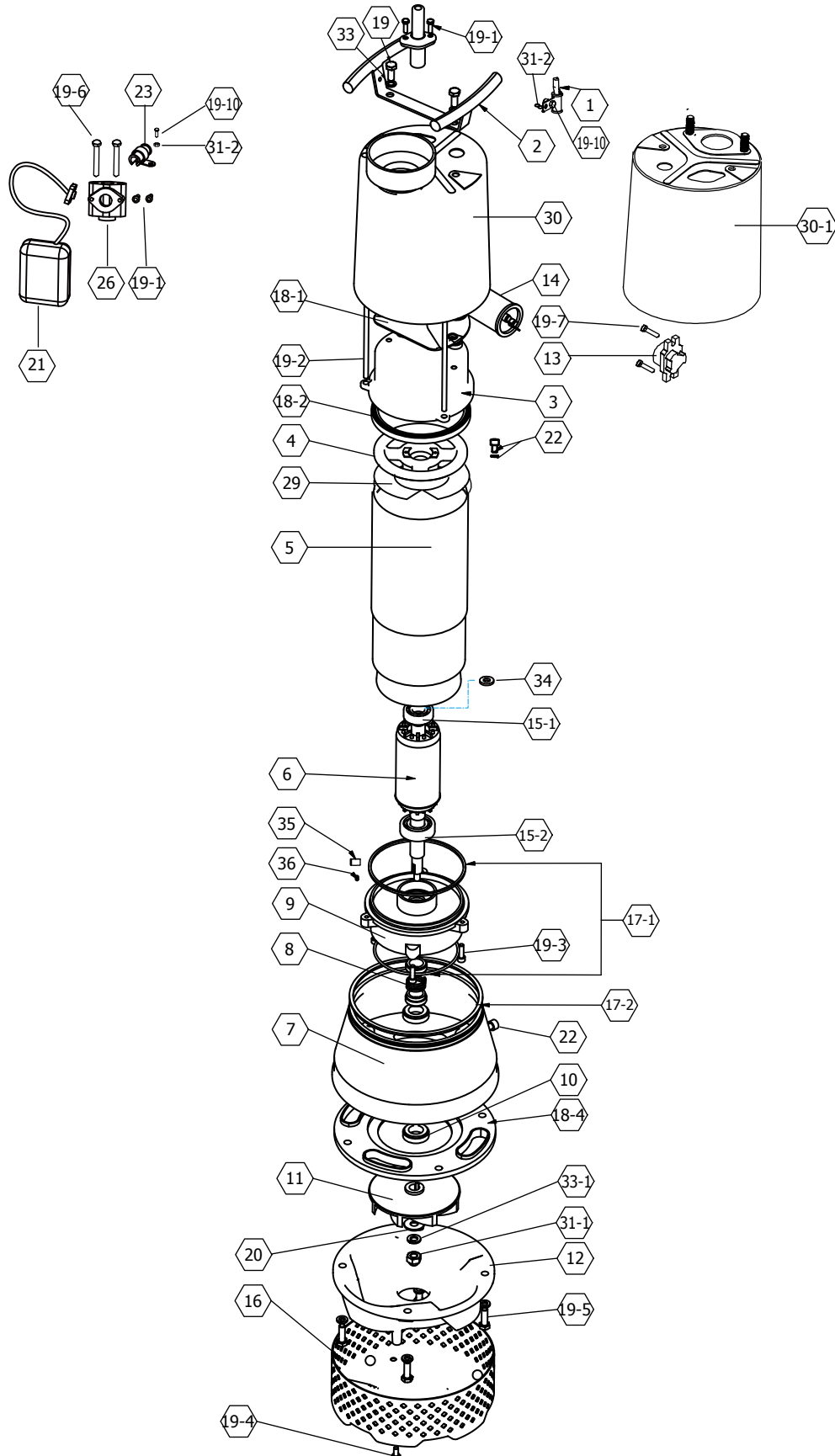
NO	Name	Mtrl	Photo	NO	Name	Mtrl	Photo
1	Cable	H07RN-F/ SJTOW/ STOW		12	Pump Casing	AISI 304	
2	Handle	AISI 304 + NBR		13	Protector (1 Phase)	KLIXON	 (Optional)
3	Motor Cover	AISI 304		13	Protector (3 Phase)	KLIXON	
4	Bracket	EN-GJL- 200		14	Capacitor	-	
5	Motor Housing +Stator	AISI 304		15-1	Upper Bearing	NTN/TPI	
				15-2	Lower Bearing		
6	Shaft with Rotor	AISI 304		16	Strainer	AISI 304	
7	Oil Chamber	AISI 304		17-1	O-ring	NBR	
				17-2			
8	Mechanical Seal	CA/CE + SIC/SIC		18-4	Volute Liner	EPDM	
9	Seal Housing	AISI 304		21	Float Switch (Optional)	-	
10	Lip Seal	NBR		27	Flange	AISI 304	
11	Impeller	AISI 304		30	Outer Housing	AISI 304	

NO	Name	Material	NO	Name	Material
18	Gasket	EPDM	19-10	Screw	AISI 304
18-1	Gasket	EPDM	20	Washer	AISI 304
18-2	Gasket	EPDM	22	Screw with O-ring	AISI 304/NBR
19	Screw	AISI 304	23	Cable Seat	-
19-1	Screw	AISI 304	26	T adapter (Optional)	-
19-2	Screw	AISI 304	31	Nut	AISI 304
19-3	Screw	AISI 304	31-2	Nut	AISI 304
19-4	Screw	AISI 304	33	Spring Washer	AISI 304
19-5	Screw	AISI 304	34	Corrugated Spring	Steel
19-6	Screw	AISI 304	35	Sleeve	AISI 304
19-7	Screw	Steel	36	Key	AISI 304

TPI is a family brand of NTN group.

ASSEMBLY VIEW

MODELS : 50(80)EUBS-5.20 (2HP)



PARTS LIST

MODELS : 50(80)EUBS-5.20 (2HP)

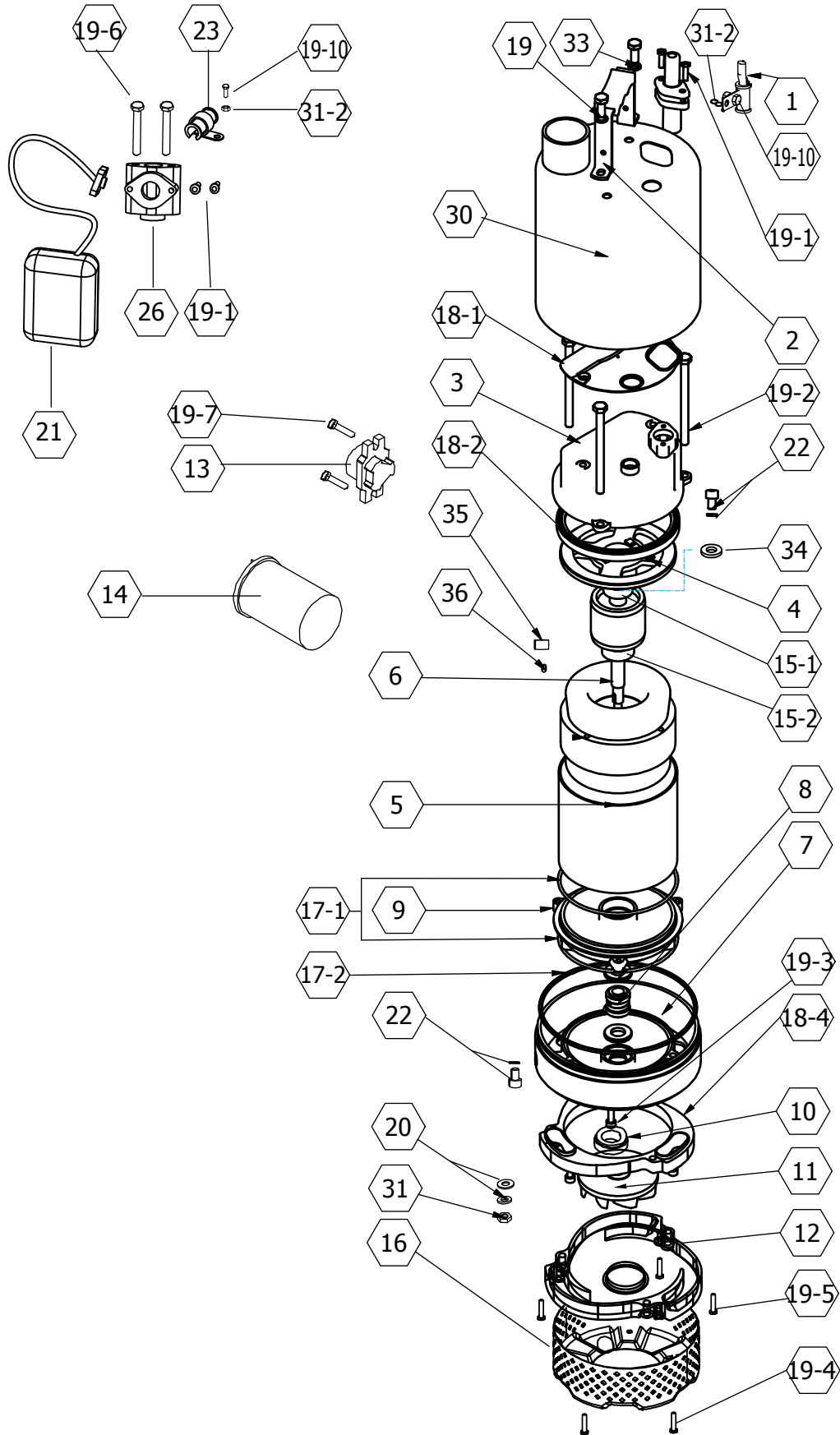
NO	Name	Mtrl	Photo	NO	Name	Mtrl	Photo
1	Cable	H07RN-F/ SJTOW/ STOW		12	Pump Casing	AISI 304	
2	Handle	AISI 304		13	Protector (1 Phase)	KLIXON	 (Optional)
3	Motor Cover	AISI 304		13	Protector (3 Phase)	KLIXON	
4	Bracket	EN-GJL- 200		14	Capacitor	-	
5	Motor Housing +Stator	AISI 304		15-1	Upper Bearing	NTN/TPI	
				15-2	Lower Bearing		
6	Shaft with Rotor	AISI 304		16	Strainer	AISI 304	
7	Oil Chamber	AISI 304		17-1	O-ring	NBR	
				17-2			
8	Mechanical Seal	CA/CE + SIC/SIC		18-4	Volute Liner	EPDM	
9	Seal Housing	AISI 304		21	Float Switch (Optional)	-	
10	Lip Seal	NBR		30	Outer Housing (2")	AISI 304	
11	Impeller	AISI 304		30	Outer Housing (3")	AISI 304	

NO	Name	Material	NO	Name	Material
18-1	Gasket	EPDM	22	Screw with O-ring	AISI 304/NBR
18-2	Gasket	EPDM	23	Cable Seat	-
19	Screw	AISI 304	26	T adapter (Optional)	-
19-1	Screw	AISI 304	29	Insulation Paper	Paper
19-2	Screw	AISI 304	31-1	Nut	AISI 304
19-3	Screw	AISI 304	31-2	Nut	AISI 304
19-4	Screw	AISI 304	33	Spring Washer	AISI 304
19-5	Screw	AISI 304	33-1	Spring Washer	AISI 304
19-6	Screw	AISI 304	34	Corrugated Spring	Steel
19-7	Screw	Steel	35	Sleeve	AISI 304
19-10	Screw	AISI 304	36	Key	AISI 304
20	Washer	AISI 304			

TPI is a family brand of NTN group.





ASSEMBLY VIEW

MODELS : 50EUBI-5.05~10 (0.5~1HP)



PARTS LIST

MODELS : 50EUBI-5.05~10 (0.5~1HP)

NO	Name	Mtrl	Photo	NO	Name	Mtrl	Photo
1	Cable	H07RN-F/ SJTOW/ STOW		12	Pump Casing	AISI 316	
2	Handle	AISI 304 + NBR		13	Protector (1 Phase)	KLIXON	 (Optional)
3	Motor Cover	AISI 316		13	Protector (3 Phase)	KLIXON	
4	Bracket	EN-GJL- 200		14	Capacitor	-	
5	Motor Housing +Stator	AISI 316		15-1	Upper Bearing	NTN/TPI	
				15-2	Lower Bearing		
6	Shaft with Rotor	AISI 316		16	Strainer	AISI 316	
7	Oil Chamber	AISI 316		17-1 17-2	O-ring	VITON	
8	Mechanical Seal	CA/CE + SIC/SIC		18-4	Volute Liner	EPDM	
9	Seal Housing	AISI 316		21	Float Switch (Optional)	-	
10	Lip Seal	VITON		30	Outer Housing	AISI 316	
11	Impeller	AISI 316					

NO	Name	Material	NO	Name	Material
18-1	Gasket	VITON	20	Washer	AISI 316
18-2	Gasket	VITON	22	Screw with O-ring	AISI 316/VITON
19	Screw	AISI 316	23	Cable Seat	-
19-1	Screw	AISI 316	26	T adapter (Optional)	-
19-2	Screw	AISI 304	31	Nut	AISI 316
19-3	Screw	AISI 316	31-2	Nut	AISI 316
19-4	Screw	AISI 316	33	Spring Washer	AISI 316
19-5	Screw	AISI 316	34	Corrugated Spring	Steel
19-6	Screw	AISI 316	35	Sleeve	AISI 316
19-7	Screw	Steel	36	Key	AISI 316
19-10	Screw	AISI 316			

TPI is a family brand of NTN group.